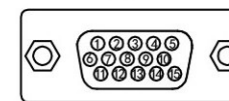
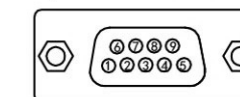


B57 Servo Board Wiring Diagram

Handwheel interface



Spindle interface



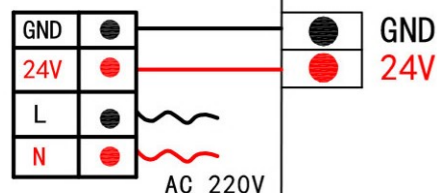
Handwheel interface pin definition

1	HX1	handwheel speed ratio X1
2	HX10	handwheel speed ratio X10
3	HX100	handwheel speed ratio X100
4	GND	return circuit ground
5	5V	5V
6	ESTOP	handwheel E-stop switch
7	HSX	handwheel axis selection X
8	HSY	handwheel axis selection Y
9	HSZ	handwheel axis selection Z
10	HS4	handwheel axis selection 4
11	HA+	handwheel encoder A+
12	HA-	handwheel encoder A-
13	HB+	handwheel encoder B+
14	HB-	handwheel encoder B-
15	HS5	handwheel axis selection 5

Spindle interface pin definition

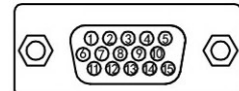
1		N/A
2	INALM2	Inverter alarm input 2
3	SP CCW	SP CCW (SP2 CW)
4	SP CW	SP CW (SP1 CW)
5		N/A
6	OA1	Spindle analog output 1
7	OA2	Spindle analog output 2
8	INALM1	Inverter alarm input 1
9	GND	Return circuit ground

24V power supply

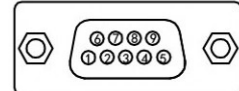


- Reserved output signal Y16
- Reserved output signal Y15
- Reserved output signal Y14
- Reserved output signal Y13
- Reserved output signal Y12
- Reserved output signal Y11
- Reserved output signal Y10
- Reserved output signal Y09
- Release/accept tool output signal Y08
- Alarm lamp output signal Y07
- Dust hood open/close output signal Y06
- Reserved output signal Y05
- Reserved output signal Y04
- Run lamp output signal Y03
- Reserved output signal Y02
- Reserved output signal Y01
- DC 24V- GND
- DC 24V+ 24V

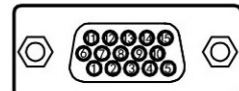
Handwheel interface



Spindle interface



A axis servo interface



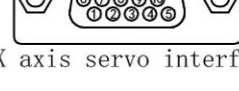
Z axis servo interface



Y axis servo interface



X axis servo interface



Input port definition

- GND DC 24V-
- 24V DC 24V+
- X01 X HOME input signal
- X02 Y HOME input signal
- X03 Z HOME input signal
- X04 Tool setter input signal
- X05 Spindle alarm input signal
- X06 Servo driver alarm
- X07 E-stop switch input signal
- X08 Foot pedal input signal
- X09 Air pump pressure sensor input signal
- X10 Manually release/accept tool input signal
- X11 Cylinder put in place signal (Not enabled)
- X12 Waiting spindle off signal
- X13 Tool released signal
- X14 Tool accepted signal
- X15 Dust hood open input signal
- X16 Spindle with or without tool input signal

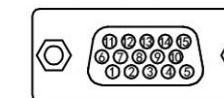
- GND Ground
- PWM+ PWM output signal+
- PWM- PWM output signal-

Output port definition

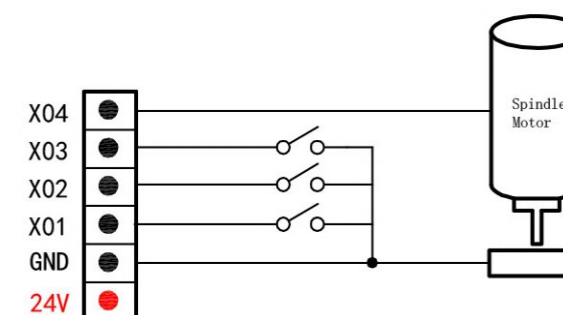
HDMI

RJ45

X axis servo interface



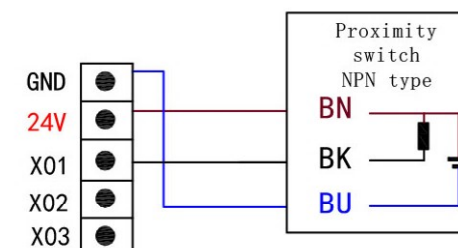
Mechanical HOME switch



Servo axis interface pin definition

1	A+	servo encoder A+
2	A-	servo encoder A-
3	B+	servo encoder B+
4	B-	servo encoder B-
5	C+	servo encoder C+
6	24V	24V+
7	C-	servo encoder C-
8	ALM	servo alarm input
9	SRV ON	servo enable
10	SRV CLR	servo alarm clear
11	PULS+	pulse difference+
12	PULS-	pulse difference-
13	STGN+	pulse direction+
14	STGN-	pulse direction-
15	GND	24V return ground

Photoelectric HOME switch



Model No.	B57 ATC motion control system
Company name	Beijing RichAuto S&T Co., Ltd