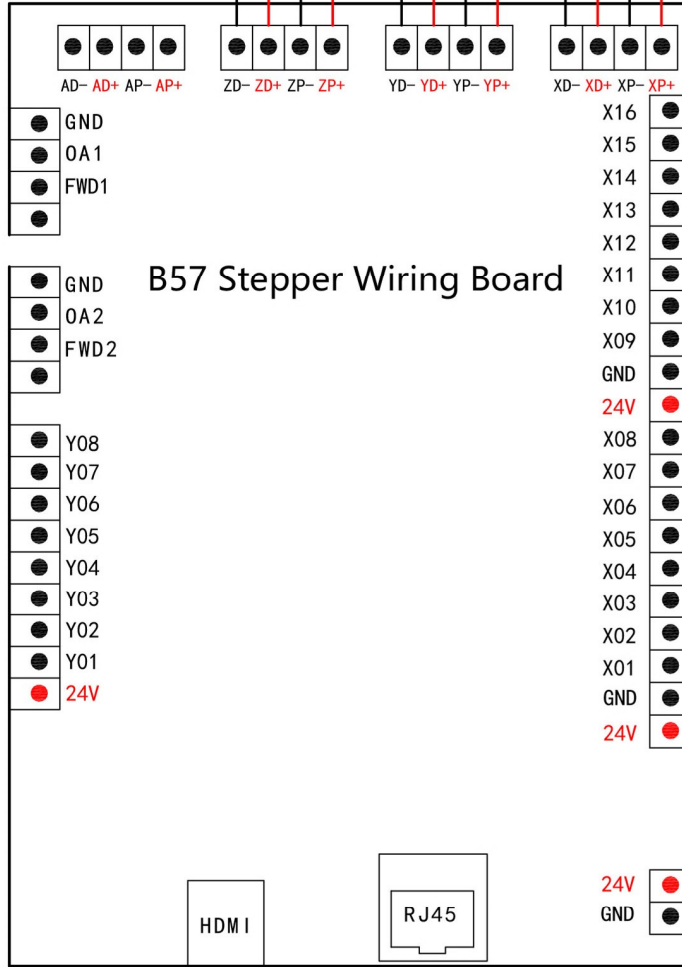


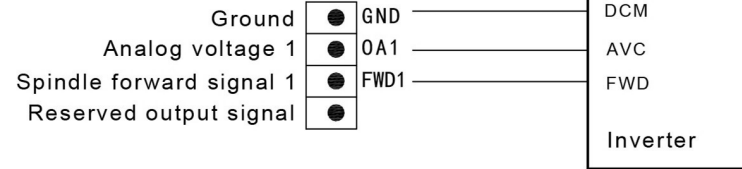
Z axis stepper motor driver    Y axis stepper motor driver    X axis stepper motor driver

D D P P    D D P P    D D P P  
 I I U U    I I U U    I I U U  
 R R L L    R R L L    R R L L  
 - + - +    - + - +    - + - +

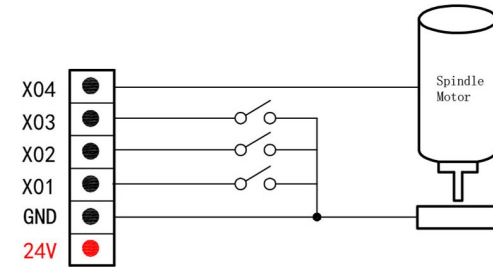


### B57 Stepper Wiring Board

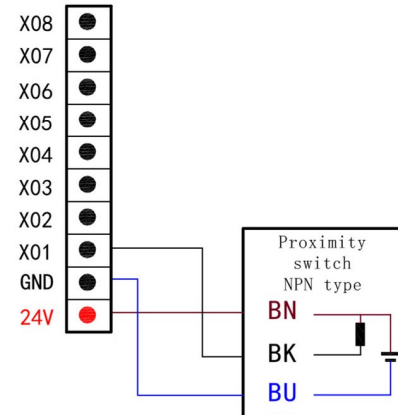
### Inverter Wiring



### Mechanical HOME switch



### Photoelectric HOME switch



- X16 Spindle with or without tool signal
- X15 Dusthood open signal
- X14 Tool accepted signal
- X13 Tool released signal
- X12 Waiting spindle off signal
- X11 Cylinder put in place signal (Not enabled)
- X10 Manually release/accept tool signal
- X09 Pump pressure sensor signal
- GND - 24V DC
- 24V + Power supply output signal
- X08 Reserved input signal
- X07 Reserved input signal
- X06 Servo driver alarm
- X05 Spindle alarm signal
- X04 Tool setting
- X03 Z home signal
- X02 Y home signal
- X01 X home signal
- GND - 24V DC
- 24V + Power supply output signal
- 24V + 24V DC
- GND - Power supply input signal

|              |                               |
|--------------|-------------------------------|
| Model No.    | B57 ATC motion control system |
| Company name | Beijing RichAuto S&T Co., Ltd |