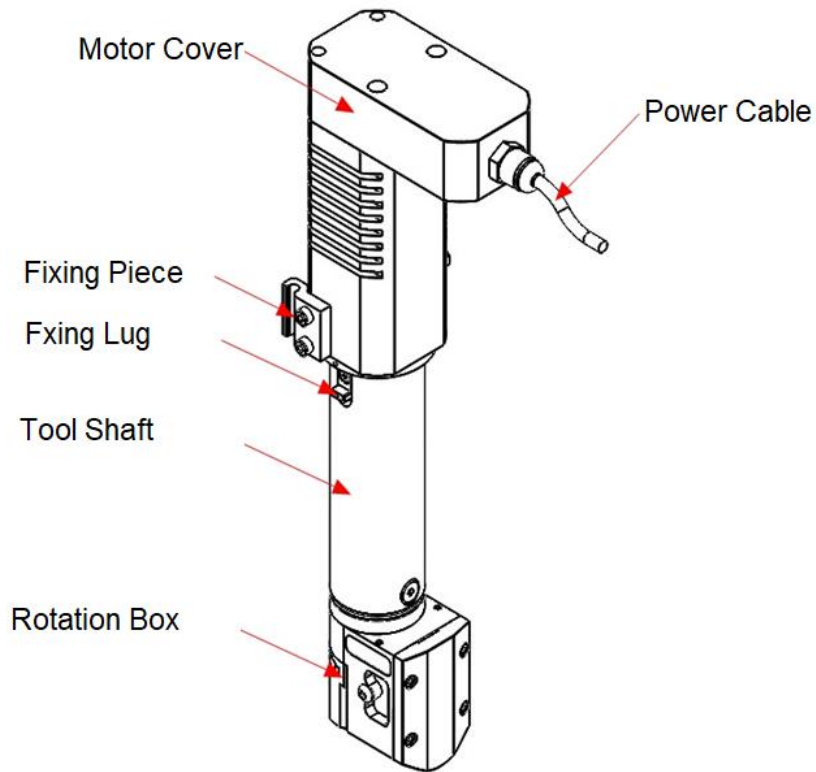
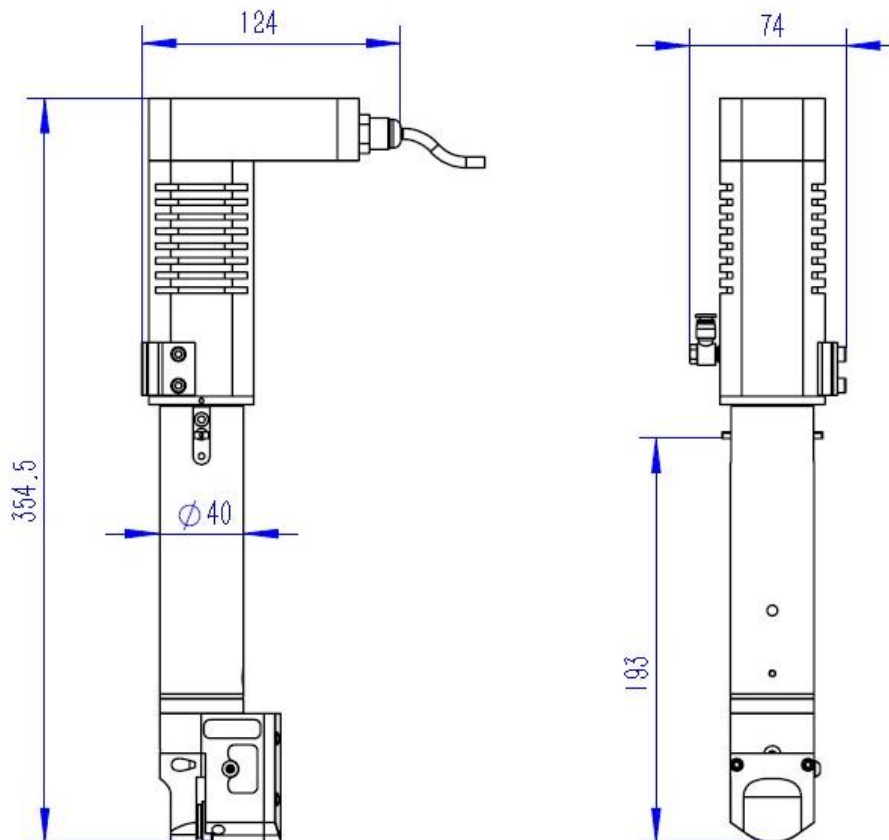


### Component Instruction



### Dimension



### Install the Knife Head

The Rotary Cutting Tool is standard coming with E2 Knife Head, there are 2 extra cutting heads for option.

RCT95037-E2  
Standard



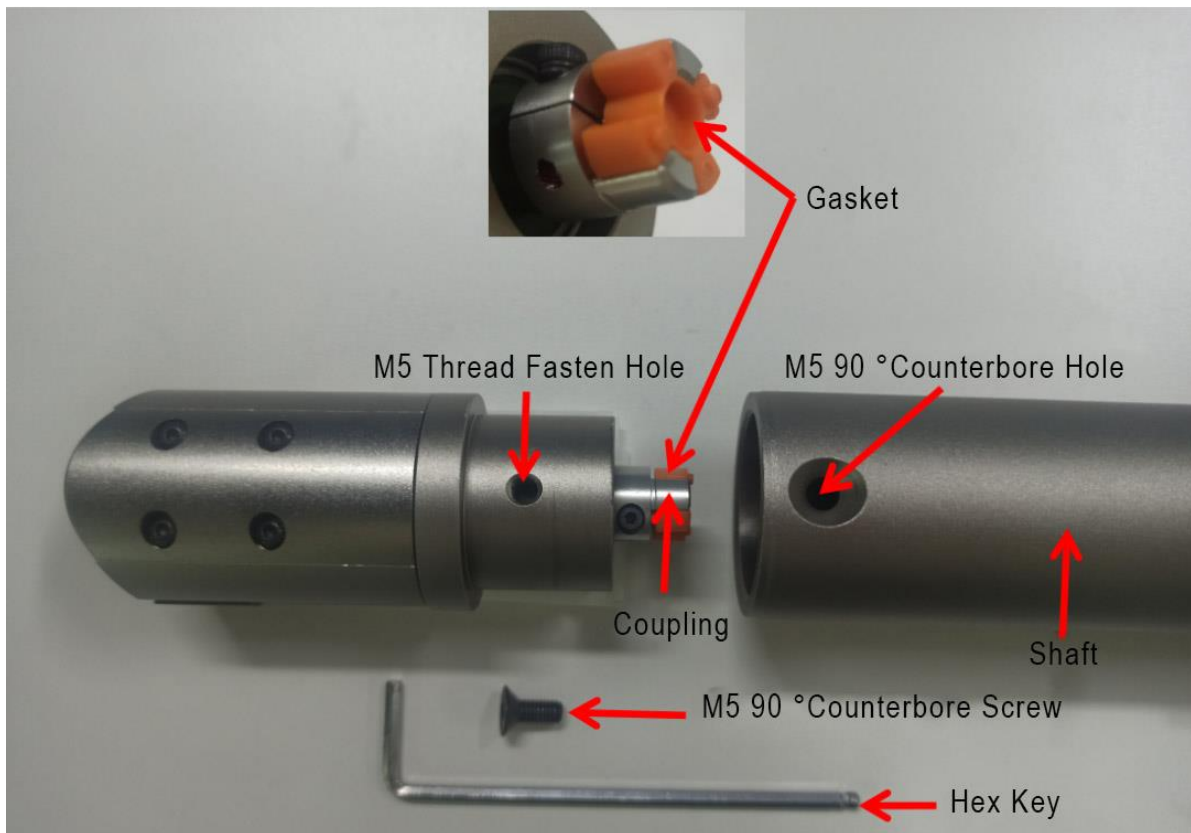
RCT95068-B  
In-line Mount Type



RCT95071-A  
For Max Dia90mm Blade

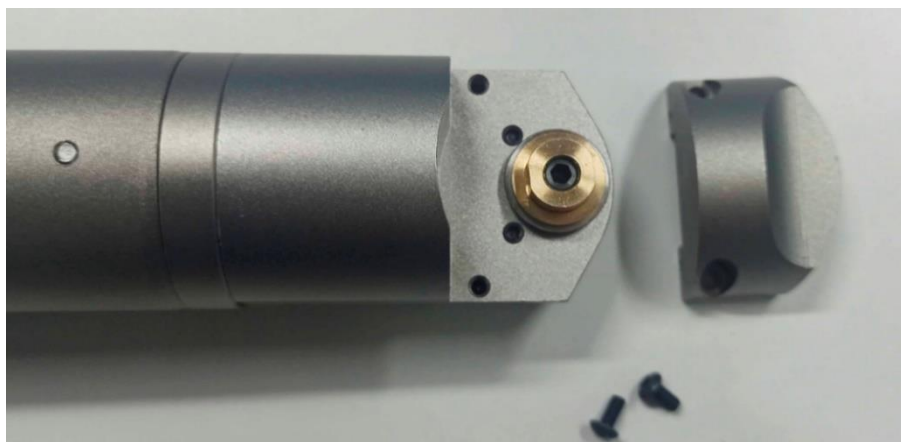
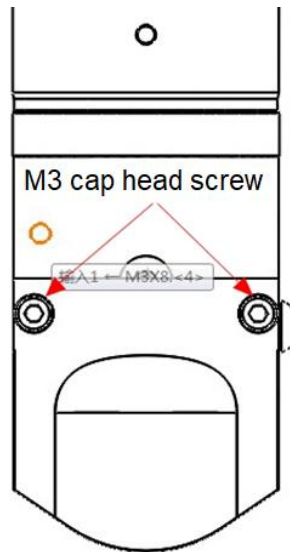


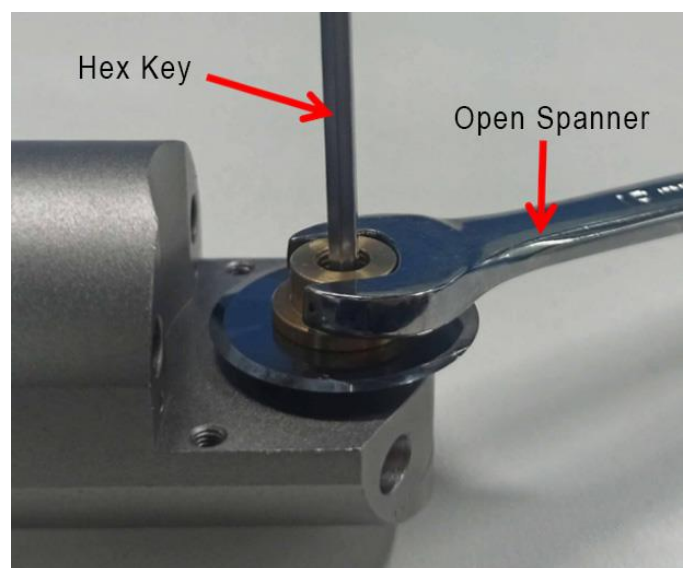
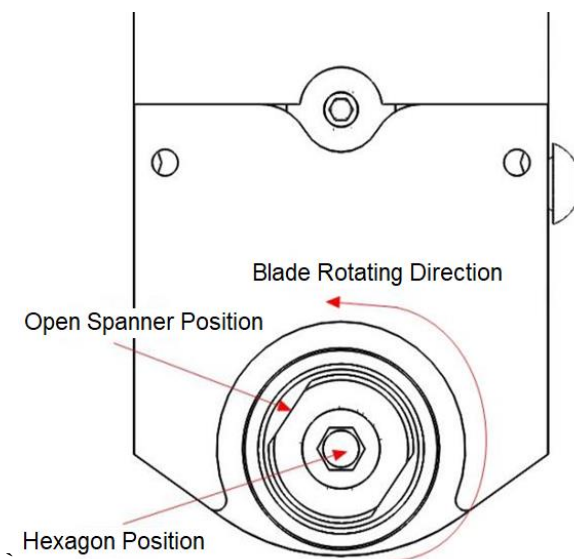
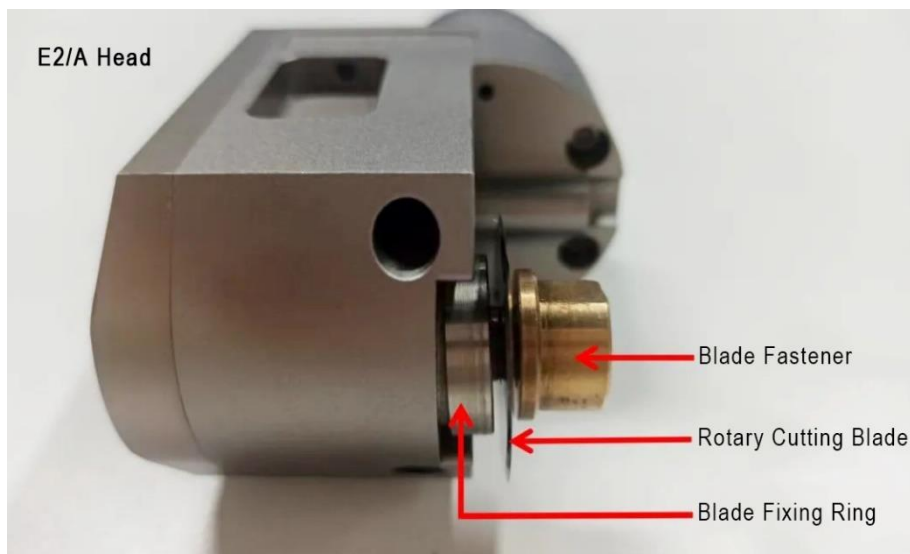
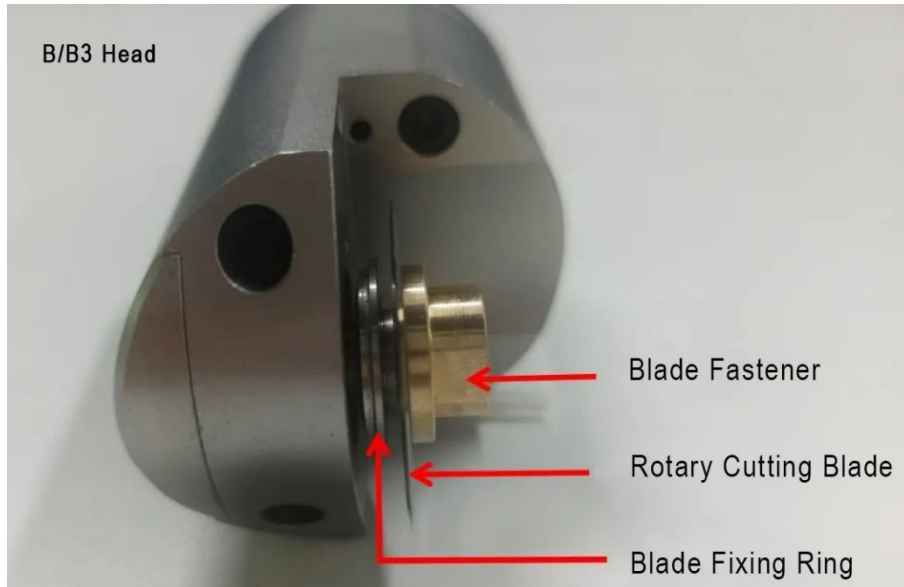
- First of all, check the gasket is in proper position
- Align M5 Fasten Holes and inset cutting head into shaft, then fix the screw by hex key, make sure the gasket part is well connected with the slot inside the shaft.



### Install the Knife Blade

- Lose 2 pcs M3 screw and remove the protective cover
- Use an open-wrench to grab the nut, then use hexagonal wrench to remove the blade.
- Put the new blade on and fix it well, rotate the blade manually to make sure it rotates smoothly.
- Do not use too much force to fix the blade. Too much force may cause the hexagonal wrench to slip and fail.









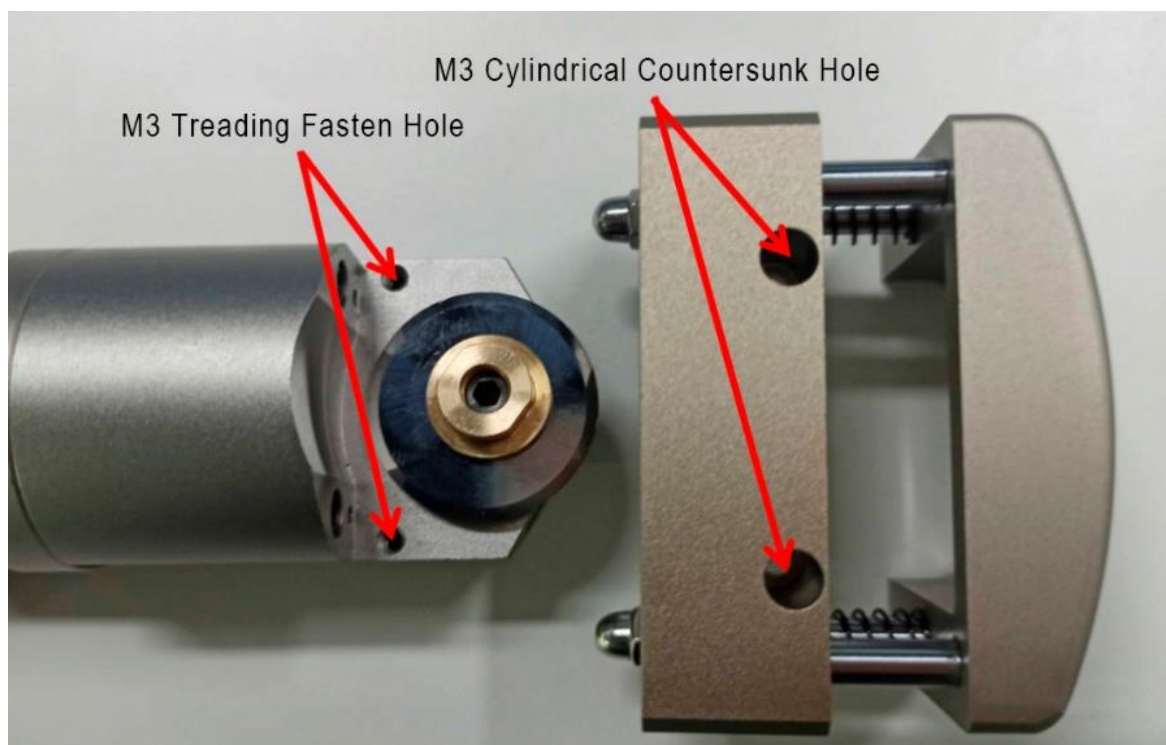
B/B3 Model Blade Fixing Ring



E2/ A Model Blade Fixing Ring

### Install the Pressuring Foot

Align M3 Fasten Holes and inset cutting head into shaft, then fix the screw by hex key.

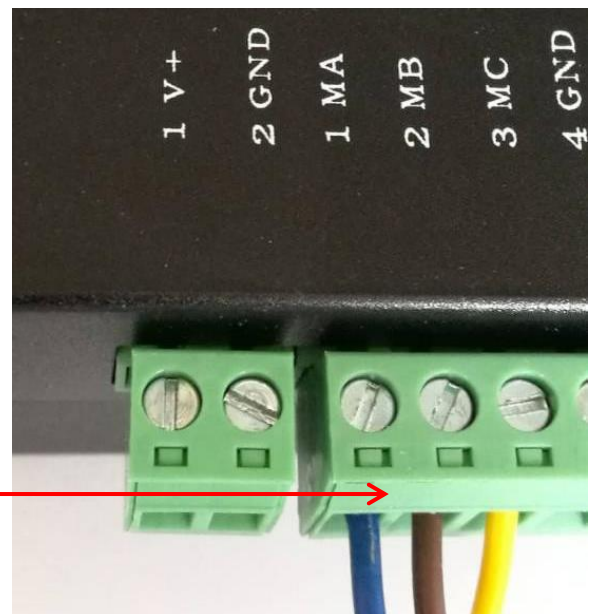
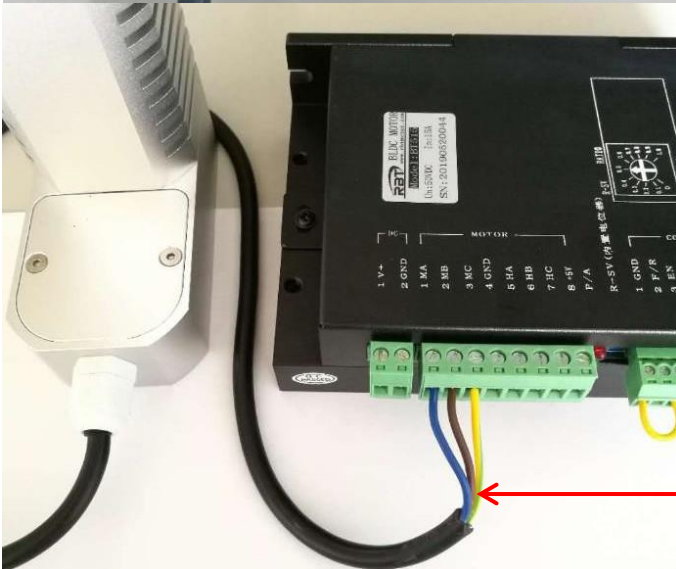


# Instruction

## Rotary Cutting Tool Head

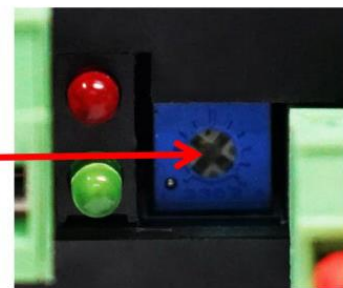
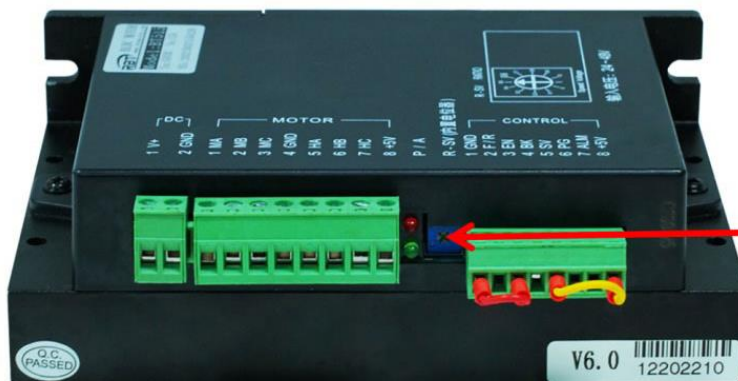
### Wiring 24V Power Supply $\geq 15A$ Required

1V+	DC24V+
2GND	24V- or COM
1MA-2MB-3MC	Tool Shaft
1GND-3EN	Control Signal
5SV-8+5V	Shortcut



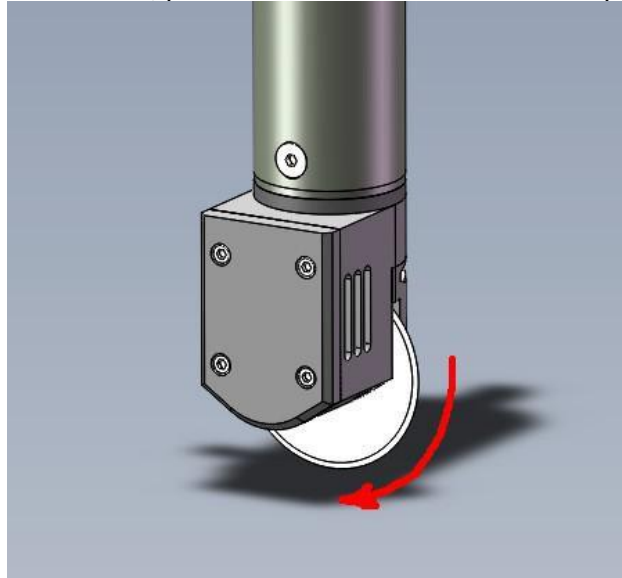
### Regulate the Frequency

Use a precision screwdriver to turn the internal potentiometer.  
Turn the potentiometer clockwise to increase the speed.



### Blade Rotating Direction

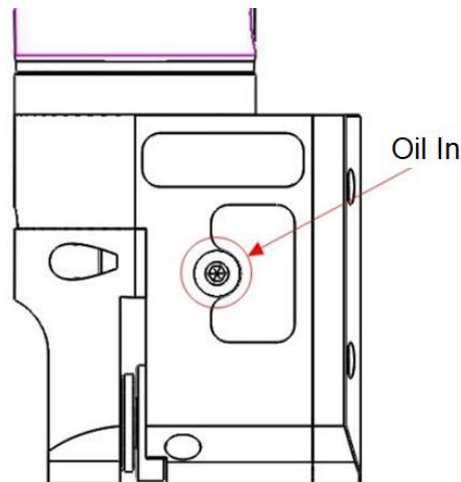
- The Rotating direction of the blade is indicated by the arrow, please avoid counter rotation, otherwise the blade will lose easily.
- To change the rotation of the blade, please reverse 2 of motor's three-phase lines.



### Oil maintenance

Mobile MP series lubricant is recommended.

- Lessen the screw at side
- Inject clean lube oil.



### Note

- Upon excessive temperature on motor, dry and clean compressor air can be input for cooling 0.2-0.5Mpa.
- After finishing cutting work, please clean the cutting chips and dust on the surface of the tool every day. Please remove the blade and clean it. Please also clean the position of blade mounting rod.
- Please make sure correct wiring before power on
- Only professional worker been allowed to dismantle cutting head
- Please take care when install/ dismantle the knife blade

# Instruction

## Rotary Cutting Tool Head

### Optional & Spare Parts

Reference Code	Description	Picture
RCT95068-B	In-line Mounting Head	
RCT95071-A	For Max Dia90mm Blade	
CCB8X063	Universal Circular Rotary Cutting Blade 8*0.63mm	
DCB8X063	Universal Decagonal Rotary Cutting Blades 8*0.63mm	
CN95136	Connectors 2/3/4/5 Cores	
BT515	BDLC Driver	
RCT95017	DC Motor	